

ENERGY



BTS 2.1

OWNER'S MANUAL

↑ TRIM LINE ↓

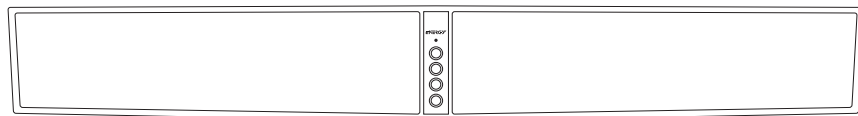
↑ TRIM LINE ↓

↓ TRIM LINE ↓

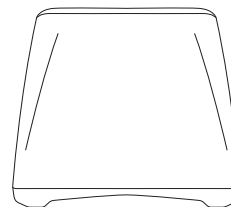
↓ TRIM LINE ↓



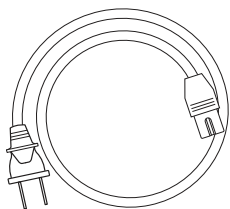
WHAT'S INSIDE



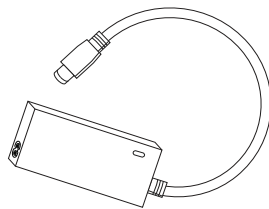
Soundbar



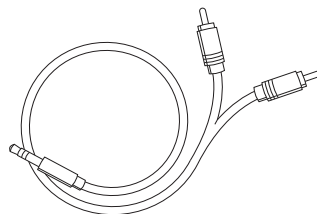
Subwoofer



AC Power Adapter



3.5mm to Dual RCA Cable



Remote



Mounting Template

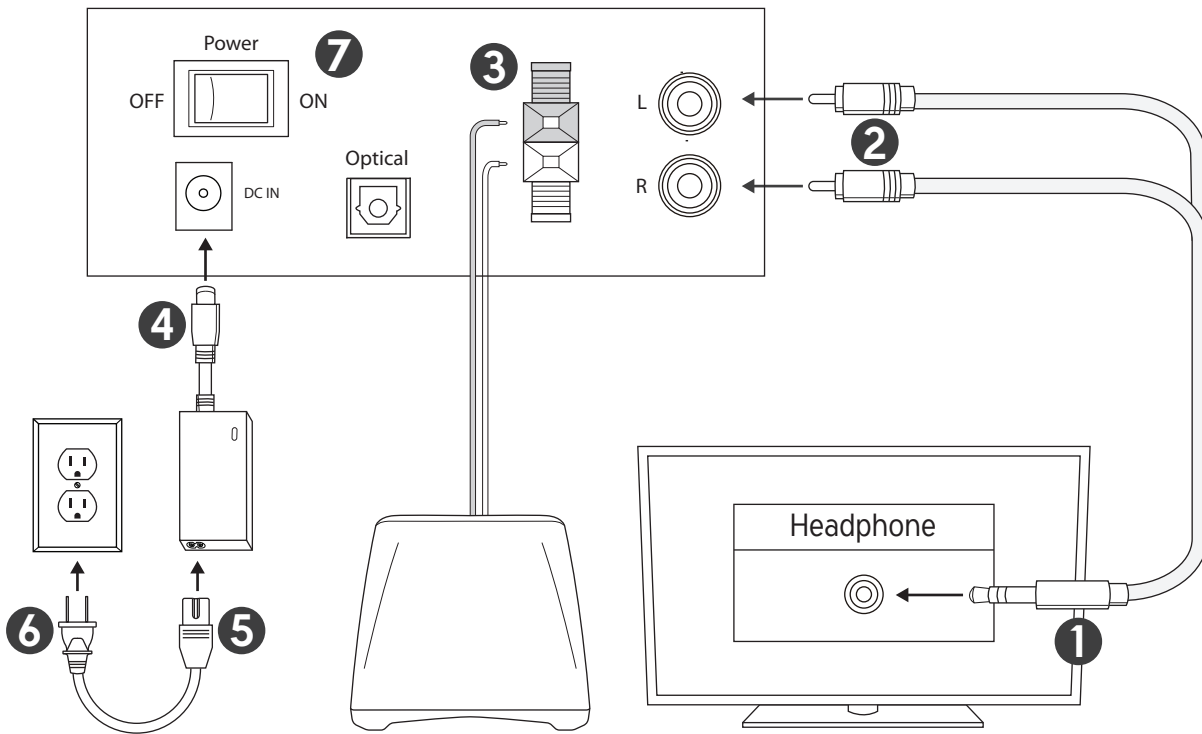
↑ TRIM LINE ↓

↑ TRIM LINE ↓

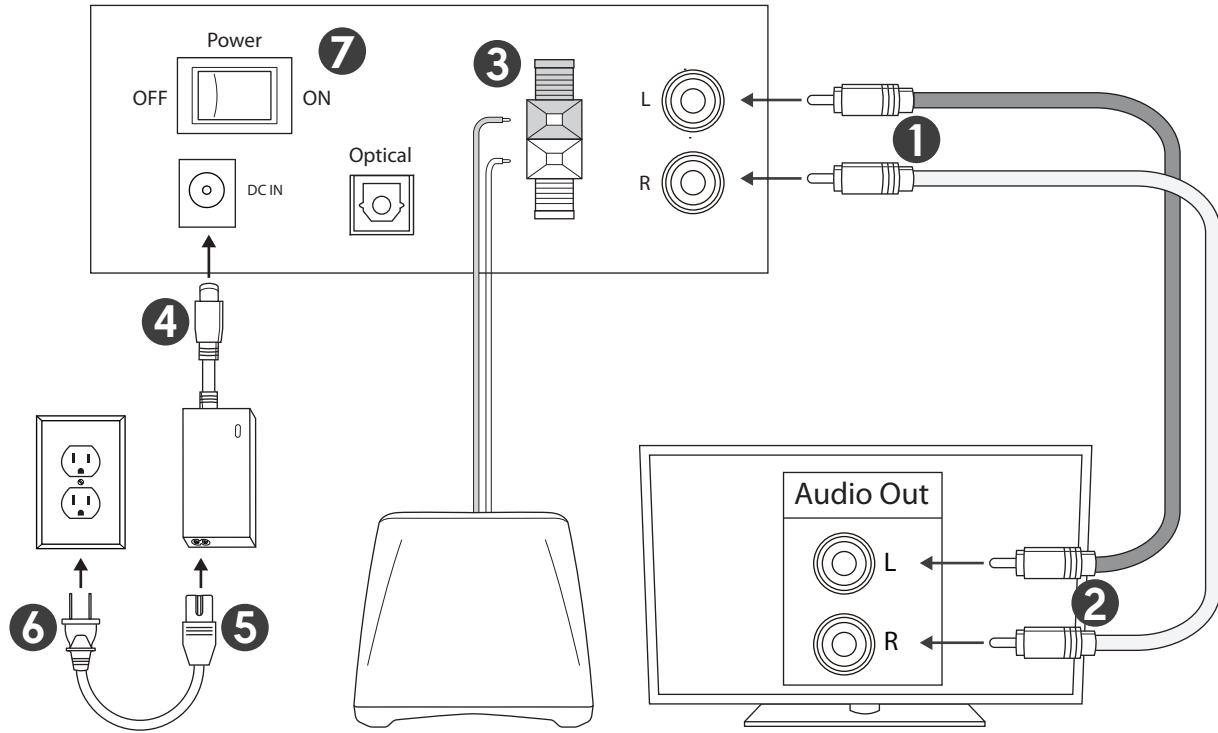
↓ TRIM LINE ↓

↓ TRIM LINE ↓

3.5mm TO DUAL RCA ANALOG CONNECTION (IF TV HAS NO HEADPHONE OUT SEE NEXT PAGE)

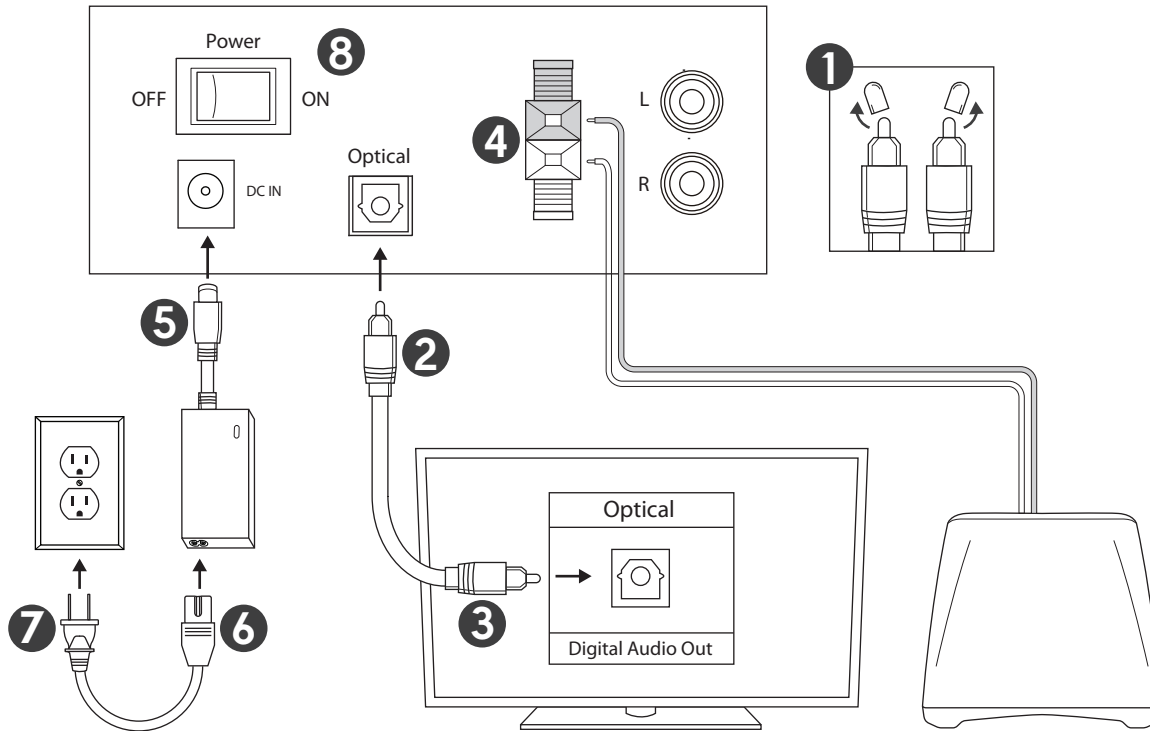


DUAL RCA TO DUAL RCA ANALOG CONNECTION



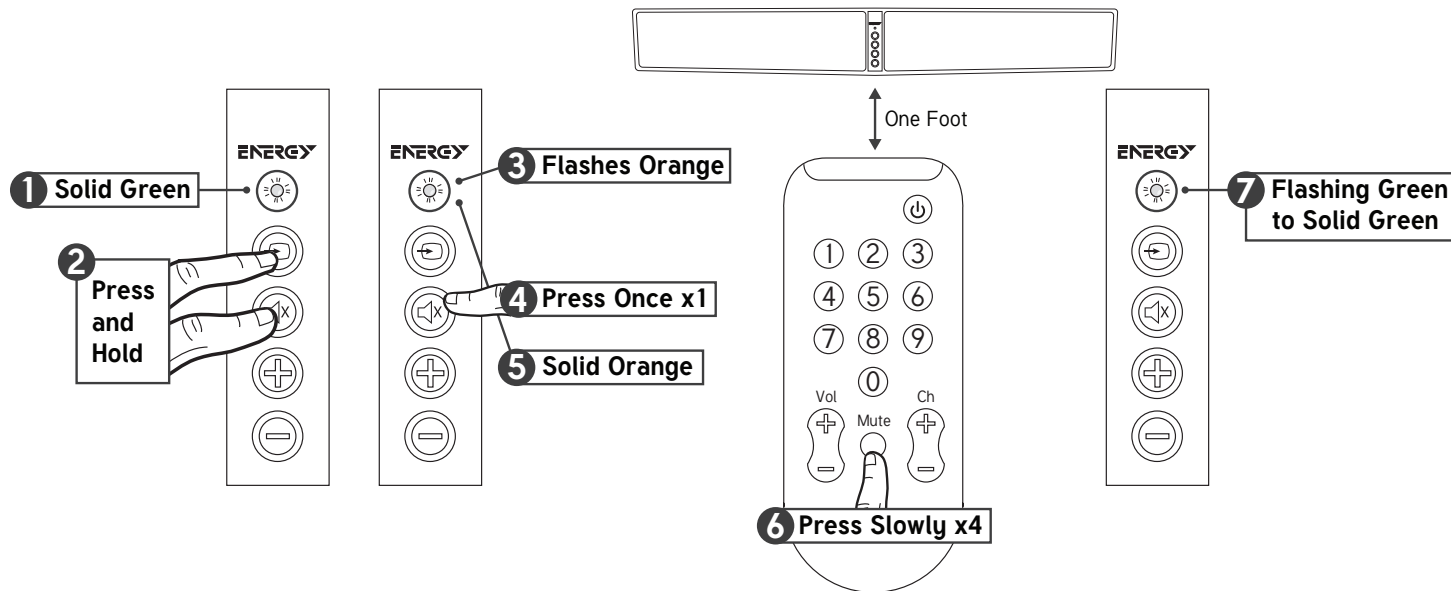
NOTE: RCA Cables not included.

DIGITAL OPTICAL CONNECTION



NOTE: Digital Optical Cable not included. The Digital Optical Connection requires that the TV outputs “PCM” digital sound and NOT Dolby® Digital sound from its Digital Output. Refer to the TV Owner’s Manual for guidance.

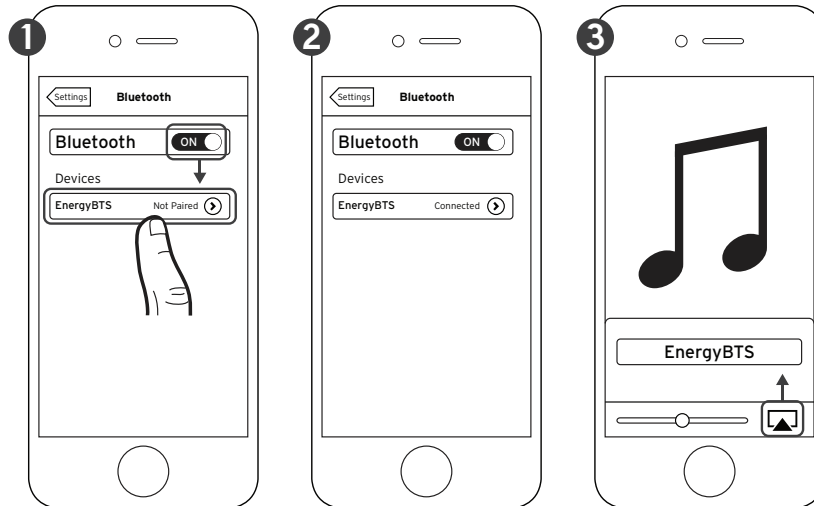
TV REMOTE PROGRAMMING



To program Volume Up and Volume Down buttons repeat the steps shown and replace steps 4 and 6 with the button you want to program.

If you are trying to program a cable/satellite box remote or other universal remote without success, please try programming your TV or Cable Box remote instead.

BLUETOOTH® WIRELESS TECHNOLOGY



*Example only. Your device may differ.

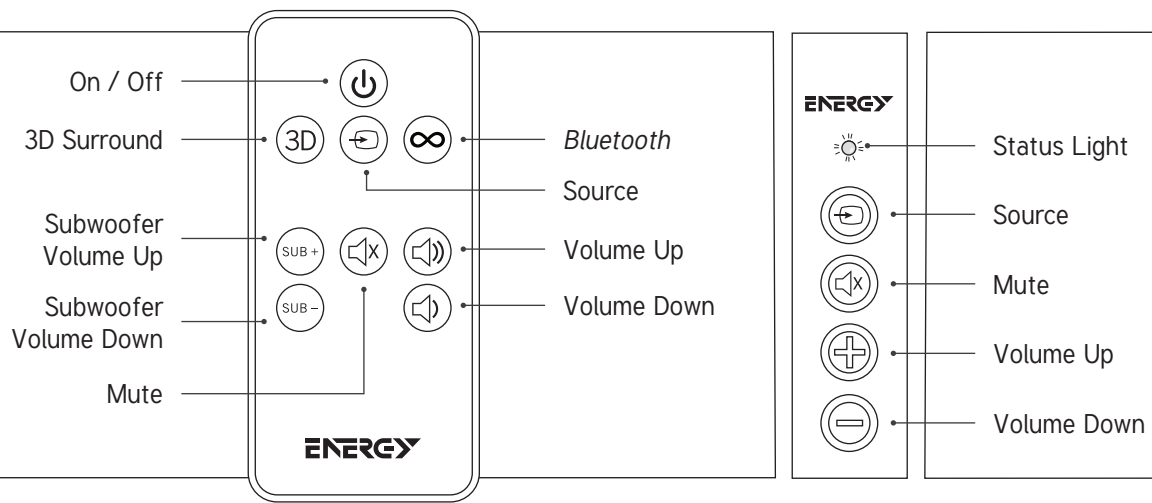
You can pair a device equipped with *Bluetooth* wireless technology at any time by activating it on your device.

Once your device equipped with *Bluetooth* wireless technology is paired, the BTS 2.1 will automatically switch to the *Bluetooth* wireless technology input (SOLID BLUE LIGHT) and you can stream your music. If you switch inputs on the BTS 2.1, the *Bluetooth* wireless technology connection will automatically be terminated.

You must disconnect your device before pairing another device equipped with *Bluetooth* wireless technology by either:

- Pressing and holding the SOURCE button on the BTS 2.1 control panel 3 seconds
- Turning off *Bluetooth* wireless technology on the paired device
- Pressing the *Bluetooth* wireless technology button (∞) on the BTS 2.1 remote

BUTTONS



STATUS LIGHTS

SOLID RED Power Off (Standby Mode)

FLASHES GREEN ONCE 3D Surround turned on

SOLID GREEN Power On, Source is Optical Input

FLASHES RED ONCE 3D Surround turned off

SOLID ORANGE Power On, Source is Analog Input

FLASHES BLUE QUICKLY Waiting to pair with *Bluetooth* device

SOLID BLUE Power On, Source is Paired
Bluetooth device

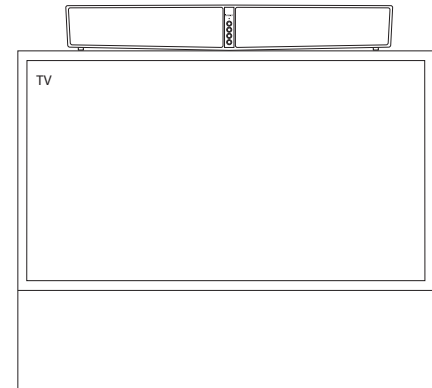
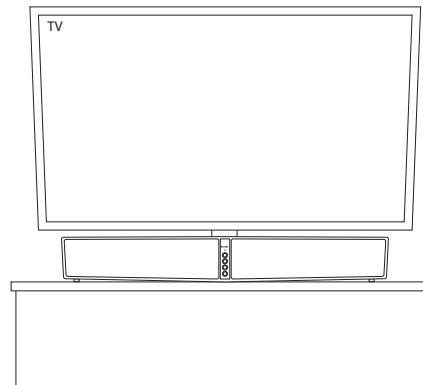
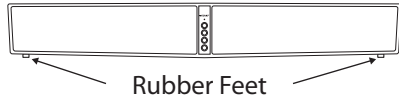
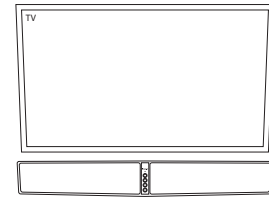
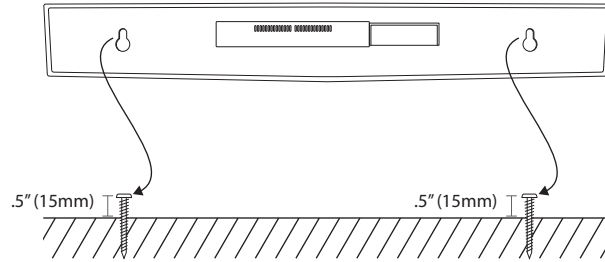
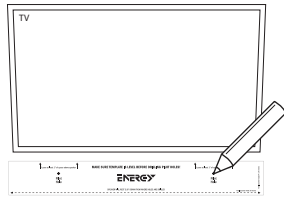
**FLASHES GREEN /
ORANGE / BLUE** Volume Up, Volume Down, Subwoofer
Volume Up or Subwoofer Volume
Down is pushed

STANDBY MODE

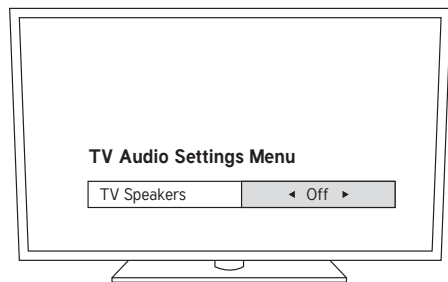
You do not need to turn off the BTS 2.1, just turn off your TV (or Satellite / Cable Box) and the BTS 2.1 will automatically go into standby mode in approximately 10 minutes.

Standby mode is indicated by a red status light on the front panel. When your TV (or Satellite / Cable Box) is turned back on the BTS 2.1 will automatically turn on again.

PLACEMENT

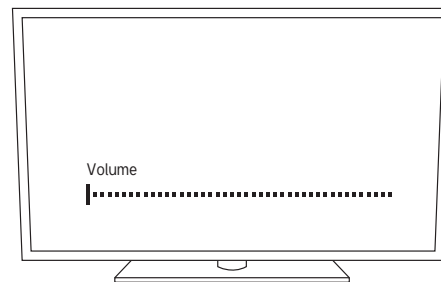


TURN OFF TV SPEAKERS

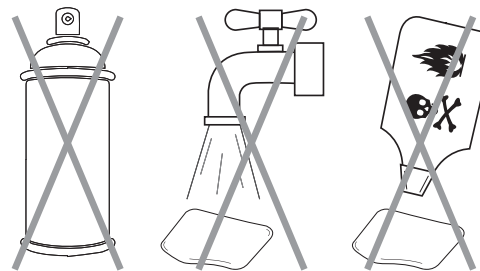
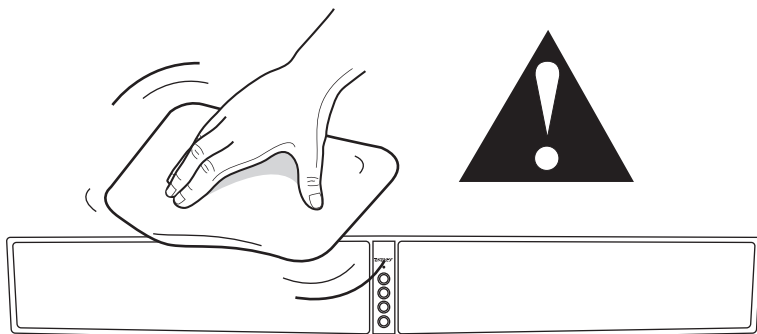


(Recommended)

OR



CARE AND CLEANING



TROUBLESHOOTING

BTS 2.1 will not Power On

- Is it plugged into a live outlet?
- Is the rear power switch on?

No sound

- Is it plugged into a live outlet and the rear power switch is on?
- Are all cables from the TV/Cable Box/Satellite Box plugged in tightly?
- If the optical cable is being used were the clear plastic caps from both ends removed before connecting?
- Is the volume turned up?
- Is standby off (no SOLID RED status light)?
- Is the source input correct?
- Turn off the rear power switch, then back on.

TV/Cable/Satellite Box Remote will not program

- Carefully follow all remote programming instructions.
- Carefully go through the remote programming again, but **use the original remote that comes with the TV**. You DO NOT need to then reprogram using your cable/satellite/universal remote control.
- Program the original TV remote to the BTS 2.1 (if original is a different one), then use the universal remote without programming it.
- You may need to repeat programming of a function in some cases.
- There may be some cases the BTS 2.1 is unable to learn certain remote codes.

Bluetooth wireless technology does not work

- Is the device paired to the BTS 2.1?
- Move your device closer to the BTS 2.1 and make sure it is paired.
- If the status light blinks RED while attempting to pair, start the pairing process over.

Subwoofer does not work

- Are the two subwoofer wires connected properly to the soundbar?
- Is the subwoofer volume on the remote adjusted properly?

For Questions, contact Energy Customer Service:

In the United States: 1-866-441-8208



Manufactured under license from Dolby Laboratories. Dolby and the double-D symbol are registered trademarks of Dolby Laboratories.

The *Bluetooth*® word mark and logos are registered trademarks owned by *Bluetooth* SIG, Inc. and any use of such marks by Klipsch Group, Inc. is under license.



energyspeakers.com

Register your Energy speaker at energyspeakers.com/register.
3502 Woodview Trace Indianapolis, IN 46268 • 866.441.8208

Energy and the Energy logo are registered trademarks of Audio Products International Corp., registered in the U.S. and other countries. Audio Products International Corp. is a wholly owned subsidiary of Voxx International Corporation.