

Reference Connoisseur Series

RC-70 Tower Speaker

Speaker System: Bass Reflex, Rear Vented	Components: 1" Aluminum Dome Tweeter
Recommended Amplifier Power: up to 250 Watts	5-1/2" Ribbed Elliptical Surround
Impedance: 8 Ohms nominal / 4 Ohms minimum	Two 6-1/2" Ribbed Elliptical Surround Woofers
Frequency response: 31 Hz ~ 23 kHz +/- 3 dB	Dimensions HxWxD: 39-7/8 x 7-3/4 x 15 (inches)
Usable Response: -10 dB Anechoic @ 26 Hz	100.4 x 20.9 x 39.6 (cm)
Anechoic Sensitivity: 92 dB	Weight: 59.6 lb / 27.1 kg
2 speakers in a typical room: 95 dB	Finishes: Black Ash; Cherry; Rosenut - Real Wood Veneers
Crossover Points: 600 Hz and 2.4 kHz	Includes: Spike Kit, Rubber Bumpers



RC-50 Tower Speaker

Speaker System: Bass Reflex, Rear Vented	Components: 1" Aluminum Dome Tweeter
Recommended Amplifier Power: up to 225 Watts	Two 6-1/2" Ribbed Elliptical Surround Woofers
Impedance: 8 Ohms nominal / 4 Ohms minimum	Dimensions HxWxD: 37-1/2 x 7-3/4 x 15 (inches)
Frequency response: 33 Hz ~ 23 kHz +/- 3 dB	94.2 x 20.9 x 39.6 (cm)
Usable Response: -10 dB Anechoic @ 28 Hz	Weight: 51 lb / 23.2 kg
Anechoic Sensitivity: 91 dB	Finishes: Black Ash; Cherry; Rosenut - Real Wood Veneers
2 speakers in a typical room: 94 dB	Includes: Spike Kit, Rubber Bumpers
Crossover Points: 1.0 kHz and 2.4 kHz	



RC-30 Tower Speaker

Speaker System: Bass Reflex, Rear Vented	Components: 1" Aluminum Dome Tweeter
Recommended Amplifier Power: up to 200 Watts	Two 5-1/2" Ribbed Elliptical Surround Woofers
Impedance: 8 Ohms nominal / 4 Ohms minimum	Dimensions HxWxD: 33-1/2 x 6-1/2 x 12 (inches)
Frequency response: 40 Hz ~ 23 kHz +/- 3 dB	87.4 x 17.7 x 31.2 (cm)
Usable Response: -10 dB Anechoic @ 33 Hz	Weight: 41 lb / 18.6 kg
Anechoic Sensitivity: 89 dB	Finishes: Black Ash; Cherry; Rosenut - Real Wood Veneers
2 speakers in a typical room: 92 dB	Includes: Spike Kit, Rubber Bumpers
Crossover Points: 1.0 kHz and 2.4 kHz	



RC-10 Bookshelf Speaker

Speaker System: Bass Reflex, Rear Vented	Components: 1" Aluminum Dome Tweeter
Recommended Amplifier Power: up to 175 Watts	5-1/2" Ribbed Elliptical Surround Woofer
Impedance: 8 Ohms nominal / 4 Ohms minimum	Dimensions HxWxD: 13 x 6-11/16 x 10-1/2 (inches)
Frequency response: 50 Hz ~ 23 kHz +/- 3 dB	33.1 x 16.5 x 27 (cm)
Usable Response: -10 dB Anechoic @ 43 Hz	Weight: 27.94 lb / 12.7 kg
Anechoic Sensitivity: 88 dB	Finishes: Black Ash; Cherry; Rosenut - Real Wood Veneers
2 speakers in a typical room: 91 dB	Includes: Rubber Bumpers
Crossover Points: 2.4 kHz	



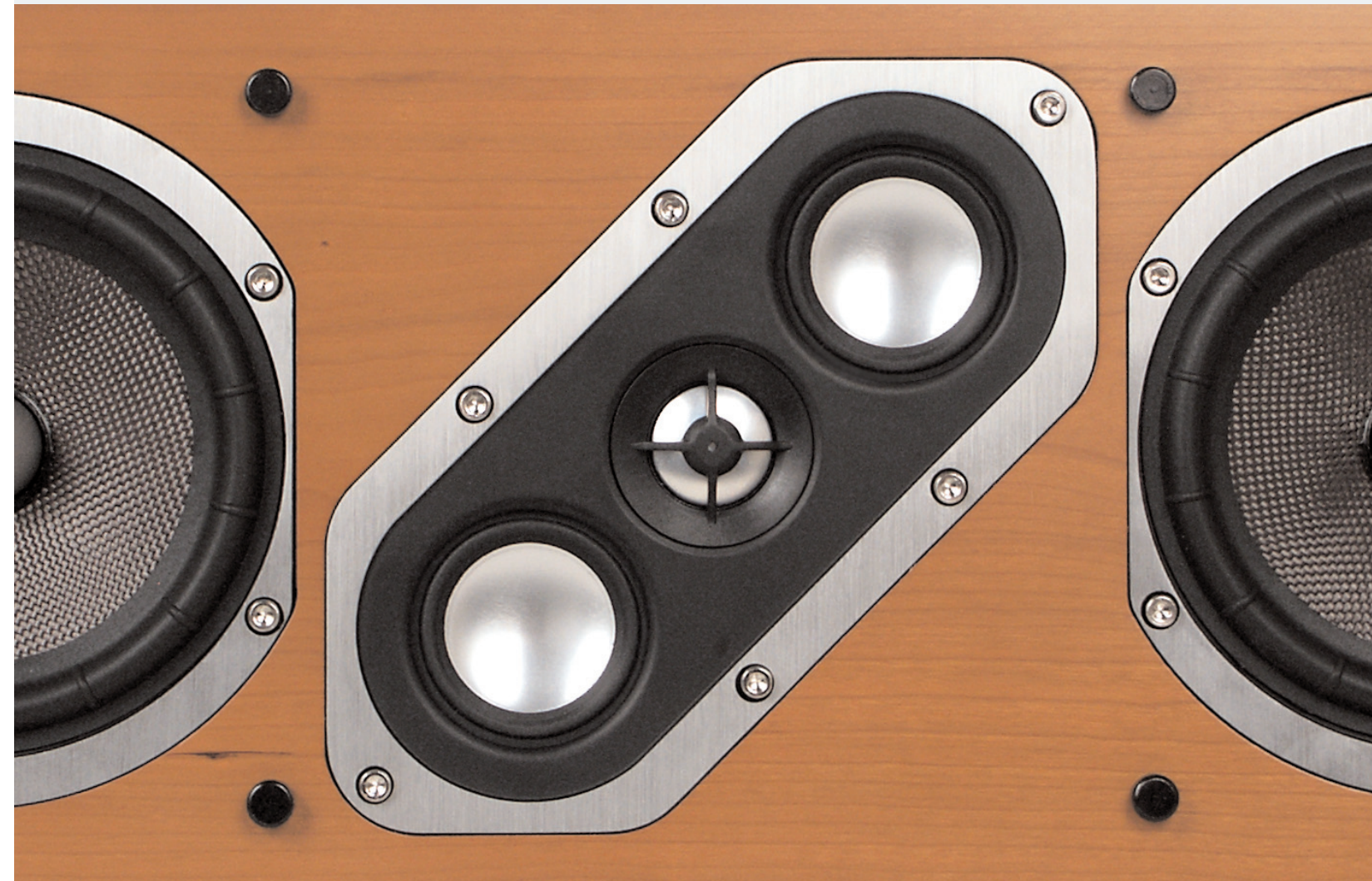
RC-LCR Left / Center / Right Speaker

Speaker System: Bass Reflex, Rear Vented	Components: 1" Aluminum Dome Tweeter
Recommended Amplifier Power: up to 200 Watts	Two 5-1/2" Ribbed Elliptical Surround Woofers
Impedance: 8 Ohms nominal / 4 Ohms minimum	Dimensions HxWxD: 7-1/2 x 19-1/2 x 10-1/4 (inches)
Frequency response: 48 Hz ~ 23 kHz +/- 3 dB	19 x 49.5 x 27 (cm)
Usable Response: -10 dB Anechoic @ 42 Hz	Weight: 24.2 lb / 11 kg
Anechoic Sensitivity: 89 dB	Finishes: Black Ash; Cherry; Rosenut - Real Wood Veneers
2 speakers in a typical room: 92 dB	Includes: Rubber Bumpers
Crossover Points: 600 Hz and 2.5 kHz	



RC-R Dipole / Bipole / Direct Radiating Speaker

Speaker System: Acoustic Suspension	Components: 1" Aluminum Dome Tweeter
Recommended Amplifier Power: up to 125 Watts	Dual 2" Aluminum Domes
Impedance: 8 Ohms nominal / 4 Ohms minimum	5-1/2" Ribbed Elliptical Surround Woofer
Frequency response: 58 Hz ~ 23 kHz +/- 3 dB	Dimensions HxWxD: 9-3/4 x 12 x 6-1/8 (inches)
Usable Response: -10 dB Anechoic @ 52 Hz	24.7 x 30.4 x 16.7 (cm)
Anechoic Sensitivity: 87 dB	Weight: 13.9 lb / 6.3 kg
2 speakers in a typical room: 90 dB	Finish: Black Only
Crossover Points: 600 Hz and 2.4 kHz	Includes: Wall Mount Bracket, Rubber Bumpers



www.energy-speakers.com

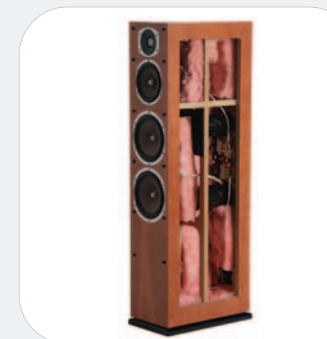
© Copyright 2006 Energy Speakers Systems
Printed in Canada
3PEB077E

North America
API 3641 McNicoll Avenue
Toronto, Ontario
Canada M1X 1G5
416.321.1800

Australia
Audio Products Group Pty Ltd.
Unit 6,61-67 O'Riordan S.
Alexandria, NSW Australia 2015
+61 02 9578 0110

Europe
API Europe BV
Poppenbouwing 56, Geldermalsen
Netherlands 4191 Nz
+31 345 588075

ENERGY
SPEAKER SYSTEMS



ENERGY
SPEAKER SYSTEMS

Reference Connoisseur Echoes Sophistication

As the name suggests, everything about the Reference Connoisseur Series is designed to meet the standards of those with discriminating taste, in terms of both aesthetics and audio reproduction. Following in the longstanding tradition of the

Reference Connoisseur name, this latest incarnation reaches even higher levels of performance and style. The result is truly outstanding sound reproduction that will excite your every sensation.



Perfectly combining technology and design

Classic contemporary design and cutting-edge engineering are the hallmarks of the Reference Connoisseur Series. The rigid MDF cabinets feature real wood Cherry, Rosenuot or Black Ash veneers that are meticulously crafted for a fit and finish that is second to none. The same attention to detail can be seen in the cast woofer

and tweeter baskets, as well as the high gloss black bases. To attain the highest levels of tonal accuracy and balance, the Reference Connoisseur Series features exclusive technologies and innovative engineering in every tower, bookshelf, center, rear or subwoofer.



Chambered Tweeter

Every Reference Connoisseur model features our exclusive 1" chambered Hyperbolic™ aluminum dome tweeter. Enclosed within its own chamber, the tweeter is separated acoustically from the other drivers in the system. This allows Energy's engineers to cross the tweeter over at a very low frequency, resulting in greater dispersion and power handling.

Patented Ribbed Elliptical Surround

Energy's engineers have created a surround unlike any other. By changing the shape of the speaker surround to an ellipse instead of a traditional "half roll", surround distortion is reduced to Zero. Side benefits include increased excursion and larger piston area, for greater efficiency. All the cast basket woofers also feature our patented "ribs" that allow the surround to stretch and contract as it moves, eliminating dimpling.

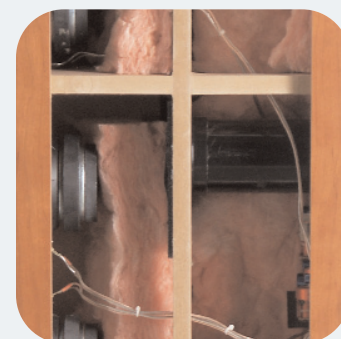
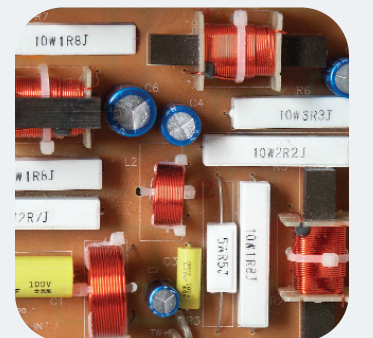


Kevlar™ Cones

To achieve the output levels required by today's movies and music, the woofer cone must be rigid, while being as lightweight as possible to react quickly. Energy's engineers chose Kevlar™ as the woofer and midrange material for its incredible strength and uniformity. The Kevlar™ cone material was then further customized by choosing a proprietary weave and thickness and applying an aqueous coating to push resonance beyond the operating range of the driver.

Tapered Crossover

In order to extract the most bass from any tower enclosure, multiple woofers are used. This generates impressive low frequencies but often midrange performance suffers. With the goal of designing the most accurate speakers, Energy created its Tapered Crossover system. This allows the top woofer to act as both a midrange and woofer, while the lower woofer acts only as a woofer. This separation of frequencies allows for the smoothest and most articulate response possible.



Medium Density Fiberboard Construction

MDF is used throughout the entire Reference Connoisseur Series of products due to its inherent strength and non-resonant characteristics. Reference Connoisseur floorstanding cabinets also use our patented Interloc™ bracing system, a full-length window brace that is not only incredibly rigid, but does not reduce internal volume. The result is a cabinet with greater rigidity, resulting in greater performance and dynamic response.